

THE VERY LATEST NEWS AND REVIEWS INSIDE!

MODEL

SEPTEMBER / OCTOBER 2017 | £4.49  
ISSUE 43 | www.modelfarmer.com

# Farmer

WE ARE PROUD TO BE THE WORLD'S NO. 1 FARMING MAGAZINE FOR ALL AGES!



DIORAMA REVIEW

FRESH NEW LOOK

## THIS ISSUE!

News, Reviews, Features,  
Custom work, Show Reports  
and More!

CUSTOM  
BUILT  
CHALLENGER  
55



**Workbench Feature**  
Massey Ferguson 8280  
Xtra is modified



**Real Machinery**  
Quadtrac Anniversary  
Feature

**12** Pages of Model  
Reviews  
Ferguson TE20, Challenger  
55, JD Chopper and More

# M & M

## AUCTIONS

**Specialist Toy, Model  
& Collectables  
Auctioneers**

# **AUTUMN AUCTION**

**Agricultural & Commercial  
Toys & Models plus RARE  
Machinery Literature**

**4th November 2017**



**For more information, visit our website or  
contact us today.**

Tel: 01406 422848

Email: [info@mm-auctions.com](mailto:info@mm-auctions.com)

Website: [www.mm-auctions.com](http://www.mm-auctions.com)

M&M Auctions  
3 Orchard Close  
Saracens Head  
Holbeach  
Lincolnshire PE12 8AR

**WORLDWIDE  
DELIVERY**

**LIVE ONLINE  
BIDDING**

# Word from the Editor

## WELCOME..

### Editorial Team

Editor - David Laley

Testing and Buyer's Guides - David Laley

Model Reviews - David Pullen, David Laley

Interviews and Shows - David Laley

Figures and Buildings - Sue Leake and Mandy Wilson

Historic Models & Figures - Robin Ketley

Model Building - Sean Pullen

Other Contributors - Paul Palmer, Austin James,

Cover - Harry Bell - [www.harrybell.co.uk](http://www.harrybell.co.uk)

Acknowledgements - Accurate Diecast / Britains / Siku / ROS /

Weise Toys / Marge Models / G&M Farm Models

### Production

Design - IGP LTD MEDIA & Publishing

Printers - Printed by Magazine Printing Company

This issue was distributed by Seymour

Model Farmer is available in all newsagents including WHSmith.

### Can't find Model Farmer near you?

Call Marketforce on 01406 424681 to find your nearest Stockist or visit [www.modelfarmer.com](http://www.modelfarmer.com) to use our store finder application.

*Model Farmer is printed on the last Friday of the month, every other Month.*

### Special Thanks

A Special thanks goes to the Dutch Model Tractor Club, the L.C.N for their permission to share / use articles from their Agritoy Publication. Thanks also goes to Jan Groot Jebbink for use of his images within the articles we use.

### Subscriptions

1 Year (6 Issues) UK £25.00 EU £35.00 ROW £40.00

2 Year (12 Issues) UK £40.00 EU £70.00 ROW £75.00

### Back Issues

Back Issues can be purchased on our website

[www.modelfarmer.com](http://www.modelfarmer.com)

### Contributions

All contributions are invited. If you have editorial you wish to submit, please get in touch with us by phone, post or email.

Phone: 01406 424681 Emails to [info@modelfarmer.com](mailto:info@modelfarmer.com)

### Advertising Sales

Sally Ebbage Tel: +44 (01406) 424681

Email: [sally.ebbage@igp-ltd.com](mailto:sally.ebbage@igp-ltd.com)

### Publisher Information

IGP LTD Tel: +44 (01406) 424681

Email: [info@igp-ltd.com](mailto:info@igp-ltd.com)

### Managing Director

Andy Ebbage Tel: +44 (01406) 424681

Email: [andy.ebbage@igp-ltd.com](mailto:andy.ebbage@igp-ltd.com)

### Copyright

This magazine is sold subject to the following conditions: that it shall not without written consent of the publishers be lent, resold or otherwise disposed of by way of trade in excess of the recommended maximum retail price. All rights strictly reserved. No part of this publication may be reproduced in any way without the prior agreement of the publisher. All letters must be accompanied by the sender's full name and address. The publisher cannot accept responsibility for unsolicited correspondence nor some of the opinions expressed. All material and artwork originated by IGP LTD, photographs, drawings, plans used in this magazine become the publishers copyright under Copyright law. Some photographs may have been digitally re-mastered. The Company reserves the right to suspend or refuse any advertisements without giving reasons. Whilst every care is taken to avoid mistakes, IGP LTD cannot be liable in any way for errors or omissions. Nor can the Publisher accept any responsibility for the bona fides of advertisers.

ISSN 2044-5105

### IGP Ltd

Registered in England No. 06594554

Plant & Machinery Model World, Model Tractor, Model Farmer, Truck Model World, MBM Auctions and the Farm Toys Forum are brands and names exclusively owned by IGP Ltd

igp limited



Show season is under way and Model Farmer will certainly bring reports from as many as we can fit in, within the next few issues. This issue covers Spalding Model Tractor Show.

After a quiet start to the year in which the hobby has seemingly meandered along, becalmed from the glut of new releases in recent years, and given collectors an opportunity to catch their breath as we move into the final quarter it's beginning to feel like we've reached the eye of the storm.

Once the likes of Replicagri had launched it's impressive Claas Dominator 98s combine harvester, Britains had finally pleased the cries of collectors for a classic implement in the shape of their John Deere forager, and MarGe models had wowed us with it's new modern CNH models, the rest of the year has been relatively gentle on collectors wallets.

However the biannual Agritechnica show in Germany is just around the corner, which if

previous years are anything to go by tends to be the spring board for the model manufacturers to surprise and deliver us with an overwhelming array of first edition and limited run models to fill our Christmas stockings much earlier than usual.

Model Farmer Magazine is likely to see first glimpses of these models when we attend the LCN Show at Zwolle on the 25th and 26th of November. We'll also be at the brilliant Lakeland Model Farm and Construction Show on November 12th at the Rheged Centre near Penrith.

David Laley

Editor

## Publishers comment

You will have noticed that this issue of Model Farmer is indeed running late. We do apologise for this and normal service should be resumed over the course of the next few issues in order to get us back on schedule.

# What's in this issue?



## Reviews

**10** **Universal Hobbies 1/8th Ferguson TE20**  
A review of this new hugely detailed Tractor from Universal Hobbies by David Laley.

**12** **Ertl Case IH Magnum 175th Anniversary Edition**  
David Laley reviews this new good looking model from Ertl.

**14** **Britains New Holland T9.530 Tractor**  
David Laley reviews this new tractor from Britains.

**16** **Universal Hobbies Deutz-Fahr Agro Prima 4.56**  
David Laley reviews this new tractor from Universal Hobbies.

**18** **Britains John Deere 3765 Trailed Forager**  
David Laley looks at this impressive implement from Britains.

**20** **Marge Models Case IH Magnum & NH T8.435**  
Model Farmer reviews these new precision tractors from Marge Models.

**22** **Universal Hobbies Massey Ferguson 1200**  
Model Farmer reviews this new special edition from Universal Hobbies.

**24** **Agringegno Models Lamborghini 603DT And R603DTB**  
David Laley looks at two specialist model replicas from an Italian maker.



## Features

**06** **Latest News**  
A look at new model announcements from around Europe.

**26** **Model and the Machine: CAT Challenger 55**  
Model Farmer looks at this Martyn Reeve special build of a CAT Challenger 55 in 1/32 scale.

**28** **Steyr Haflinger & Pinzgauer**  
Robin Ketley looks at some unusual utility vehicles in 1/43 scale.

**30** **Vilmer Bukh DZ30**  
Hans Sikkema & Tammo Broekema review a rare model not often seen.



Images on this page including the front cover have been produced by Harry Bell. Harry has included an Autumn theme in his photography this issue.

# Got Feedback?

If you have feedback about the magazine, please contact the editor on [editor@modelfarmer.com](mailto:editor@modelfarmer.com) or post a private message to us on facebook.



## Workbench

**32** **Conversions Made Simple Siku Massey Ferguson 8280 Xtra**  
An easy guide on simply modifications to a Siku Massey Ferguson.

## Shows and Layouts

**34** **Spalding Model Tractor Show Autumn 2017**  
A review of Autumn Model Tractor Show held at Spalding, Lincolnshire.

**40** **FARM DIORAMA by Colin Drew**  
Model Farmer profiles Colin Drew's layout from the recent Autumn Tractor World Show.

## Real Machinery

**42** **Case IH Quadtrac 20th Anniversary**  
A report on the history of the Case IH Quadtrac in pictures from David Laley.





## NEW ANNOUNCEMENTS FROM UNIVERSAL HOBBIES

Universal Hobbies continue to accelerate their releases up to and including Agritechnica this year. Whilst the bulk of Agritechnica models are still under wraps, there has just been news of a new Case IH Quadrac that has been updated from the original. This includes a new larger exhaust system. Also due for release shortly is a 1/32 Ferguson TE20 with front end loader. Sure to be a popular one. Their use of the Zetor Crystal tooling has not dissipated with the

announcement that two further Zetors are due to land shortly. There is also a Horsch Terrano 3 FX due out and a Fendt 724 Vario "Design Line" (Narrow wheel Edition).



## WEISE TOYS RELEASE NEW FENDTS



Weise-Toys have released a first pre-production image of their all new 1/32 Deutz Intrac (2003). This hotly anticipated model is due out this November. They have also just announced that they will be shortly release (again) the Fendt Favorit 824 (96-00). Finally don't forget the latest version of the the Deutz-Fahr Agrotion 6185 TTV T4F. It is due out about now with a lot of changes!



# Got news?

If you have some news or information about the hobby you wish us to publish, please contact the editor on [editor@modelfarmer.com](mailto:editor@modelfarmer.com) or post a message to us on facebook.



## TRAKTORADO 2017



Three new Limited 1/32 Fendt models in Nature Green will be available at the Traktorado show in Husum (Germany) this month. A Fendt 718 Vario - 15 Jahre Special - Limited to 150 pieces and priced 65 euros. A Fendt 720 Vario with Silver Rims, limited to 500 pieces



and priced at 45 euros and a Fendt 722 Vario, Danmark



edition, limited to 500 pieces and priced at 45 euros.

## News in brief

### NEW VENUE FOR NORTHUMBERLAND

The organisers of the 2018 Northumberland Model Tractor Show have contacted us to inform readers that next year's show will be a one day event on Saturday 10th March 2018, running 12pm til 8pm at the sizeable Torch Centre venue on Corbridge Road, Hexham, NE46 1QS. Entry for Adults will be just £2.00 and Under 16's Free. For more details visit their website at [www.northumberlandmodeltractor.co.uk](http://www.northumberlandmodeltractor.co.uk)

### NORTH DOWN SHOW

The 2017 North Down Farm & Construction Model Display Show will take place on Wednesday 15th November 2017. At this year's show there will be a large display celebrating the 100 years of Ford and Fordson tractors. So come along and join in the Ford and Fordson display celebrations. Plus a large display of the model railways from the Bangor Model Railway Club. Also included will be a large JCB model display and lots of model farm diorama's. Included in this year's show there will be plenty off models for sale from Alastair Bell's muddy farm selection & A.M. models (Alan Mulholland). As always the show is supporting Chest Heart & Stroke N.I. There will be a raffle held on the night with great prizes.

### COMPETITION WINNER

For our last issue on facebook we announced that one lucky magazine reader may find a golden ticket in their copy of the publication. The winner receiving £200 of vouchers to spend on models. Well the lucky price was found in Derbyshire by Jonathan Proctor. Only one subscription winner has also come forward. There will be a new competition for this issue. Do you have the golden ticket?

## ROS VALTRA TRACTORS



There will be Two new 1/32 Valtra models by ROS this year. The Valtra A104 with Front loader and Valtra N174 (Blue). Both models will be around £65 and will be available at Agritechnica from the Valtra Stand!

## SCHUCO'S NEW DEERE DUO



The John Deere 5125R by Schuco in 1/32 scale has just been released is now available from dealers.

The model has raised a few eyebrows since it is retailing at over £90 and reports suggest it may not be so different to Wiking detail. We'll review this model in our next issue.

Also due soon (at Agritechnica) is Profi magazine's show special model, a John Deere 4650 with rear duals. 1000 models will be made available at



the show with a price set a very reasonable 70 euros.

# One32

# FARM TOYS & MODELS Tel: 01722 718851

Grims Lodge Farm, Coombe Bissett, Salisbury, Wiltshire, SP5 4LP

## siku



**FENDT 939 VARIO  
RADIO CONTROL**



**JOHN DEERE  
RADIO CONTROL**



**NEW  
LIEBHERR R980  
RADIO CONTROL**



**FENDT 1050  
VARIO 4WD**



**JOHN DEERE  
R4040**



**CLAAS AXION  
950 4WD**



**KRONE BIG X  
850 FORAGER**



**CASE IH  
QUADTRAC 600**



**VALTRA T191 &  
HEDGE CUTTER**



**CLAAS TRACKED  
770 LEXION**



**NEW  
MANITOU MLT840  
TELEHANDLER**



**JOHN DEERE  
6210R 4WD**



**MF 8680 DYNA-VT  
4WD**



**CLAAS XERION  
5000**



**RADIO CONTROL  
CLAAS 850**



**RADIO CONTROL  
JD 8345R**



**RADIO CONTROL  
FENDT 939**

**NEW**



**MAISTO 1:16 RADIO CONTROL NEW HOLLAND T8.320  
(FITS BRUDER & BRITAINS BIG FARM TRAILERS & IMPLEMENTS)**



## WIKING



**CLAAS 430  
ARION LOADER**



**FENDT 1050  
VARIO 4WD**



**LEMKEN VEGA  
12 5000**



**CLAAS LEXION  
760 TRACKED**



**CLAAS 2600  
LINER**



**CLAAS JAGUAR  
860 FORAGER**

## BRITAINS



**NEW HOLLAND  
T9.530**



**NEW  
JOHN DEERE  
3765 FORAGER**



**JOHN DEERE  
8400R 4WD**



**NC MUCK  
SPREADER**



**JCB HYDRADIG  
EXCAVATOR**



**NC 314 POWER  
TILT DUMP**

## UNIVERSAL HOBBIES

"For those who prefer the finest"



**COUNTY 1884 Q  
CAB**



**MCCORMICK  
X8.680 VT-DRIVE**



**FENDT 724 VARIO  
4WD**



**DEUTZ FAHR  
AGRO PRIMA 4.56**



**ZETOR CRYSTAL  
12045 (1972)**



**ZETOR CRYSTAL  
12011 (1972)**

**VISIT OUR POP UP SHOP ON OUR FARM NEAR  
SALISBURY THIS DECEMBER!  
OPENING TIMES AND MORE INFORMATION CALL OR VISIT OUR WEBSITE**

FREE SPEEDY DELIVERY ON EVERYTHING!

# www.one32.co.uk

Email: [sales@one32.co.uk](mailto:sales@one32.co.uk)

Phone orders: 01722 718851





*just like the real thing*



The Sales Partnership Distributors Ltd  
Ancastle House  
Gravel Hill  
Henley on Thames  
RG9 1TP

Tel: 01491 412415  
Fax: 01491 412915  
Contact Name - James Triptree

# Universal Hobbies

# 1/8<sup>th</sup> Ferguson TE20

■ **SCALE** 1/8 ■ **MODEL** Ferguson TE20 ■ **MAKER** Universal Hobbies  
■ **PRICE** £249.99 ■ **AVAILABILITY** Out Now ■ **VERDICT** ★ ★ ★ ★ ★

**W**e've seen Ferguson's iconic TE20 reproduced and released by Universal Hobbies in 1/43rd scale, 1/32nd scale, and 1/16th scale, now they have gone ahead and produced a limited edition version in the enormous scale of 1/8th! Make no mistake about it this model really is huge, and wouldn't look out of place as a garden ornament, as well the highly treasured collector's piece it's supposed to be.

Made almost exclusively from resin the limited to 1000 pieces model measures some 17.5cm in width, 33cm in length and 16.5cm in height to top of the steering wheel, meaning you need a fairly significant space to display this model in. That said given the materials it's constructed from it is a relatively light model for it's size. Given the detail, and plastic external parts, a plan of action is most definitely needed to handle the model too. At £219 this is a dedicated collector's display model, and certainly not for any young carpet farmers to

start test driving around the kitchen floor. Whilst not wholly fragile you have to be very careful with it.

On the surface and from a distance this certainly looks like an exceptionally good and well detailed display model. Whilst functionality isn't generally seen as an important criteria in a model of this nature, the 1/8th scale TE20 does at least run on freewheeling tyres and rims. The tyres themselves are made from relatively soft rubber, and contain an accurate and period tread pattern, particular the single ribbed tyres on the front. The rims too are very accurate castings of those fitted to early TE20 tractors, and whilst the wheel nuts on the front don't look great, those on the rear along with the rear wheel lugs are very well defined.

The bonnet is one complete casting with the grill slats inserted separately, these look excellent and well proportioned to the model, neatly finished off with the blue Ferguson badge embossed into the front. Engine detail is second to none with the radiator and fan

beautifully detailed along with the fuel pump and started motor all given the same care and attention.

It's just a crying shame Universal Hobbies could find seemingly no way of producing a bonnet that actually opened to reveal the superbly

reproduced features of the engine.

The front axle and steering geometry, whilst accurate in it's reproduction and construction, recreated using several individual parts offer's no movement or function, but the detail in the axle casting is clean, defined and blemish free.

Moving on to the most delicately detailed area of the model, the operator's controls have certainly been carefully modelled. The steering is beautifully accurate, picked out in both silver and black paint, whilst the remaining foot pedals, hydraulic, and gear levers are all neatly positioned and to scale within the operator's platform. The only separate item contained within the box for the model is the seat, which whilst accurate fit's quite loosely atop it's mounting bracket.

Just like the steering, the tractor's iconic rear hitch is constructed in many individual parts, with the link arms held in place tightly with several small screws which don't detract from the model's detail but do restrict movement and function

in the lower arms. The check chains, and top link do however move freely.

This is a great looking collector's piece, and one of the best looking large scale Ferguson models around. Yes it lacks function, and unless you're a highly skilled scratch builder unlikely to be displayed with any matching implements, it still





represents good value for a limited edition collector's model of this size. For a model made largely from resin, a material notorious to achieve a clean and high level of finish this is a really well crafted model despite it's relatively uncommon scale.

## Finer Details



"This is a very well finished model in resin"

### OUR VERDICT

**The Good:** Very well finished model in resin.

**The Not so good:** Lack of an opening bonnet.

<b>Model detail:</b>	90%
<b>Model accuracy:</b>	95%
<b>Build Quality:</b>	90%
<b>Functionality:</b>	80%
<b>Value:</b>	85%

**OVERALL: 88%**



*Above and Below: More pictures of the model.*



"The tractor's iconic rear hitch is constructed in many individual parts."



"The bonnet is one complete casting with the grill slats inserted separately."



## Ertl Case IH Magnum 175th Anniversary Edition

■ **SCALE** 1/32 ■ **MODEL** Case IH Magnum ■ **MAKER** Ertl (Tomy)  
■ **PRICE** £59.99 ■ **AVAILABILITY** Out Now ■ **VERDICT** ★ ★ ★ ★

One of Ertl's most eye catching liveried 1/32nd models to be released recently is their Case IH Magnum 380 celebrating the 175th anniversary of Case agriculture worldwide. It's a paint scheme that originally featured

on Case IH's autonomous tractor that was shown to the public last year. Whilst the livery is yet to appear on a production Magnum, a similar set of colours appears on the 20 anniversary Quadtrac that saw the light of day this year.

The model itself is effectively a

full specification State side Magnum fitted with wider spaced dual wheels, bar rear axle and fold out indicator bars. The overall finish of the special livery is exceptionally crisp with no sign of any blemishes at all across the bonnet and wings of the model.

The model free wheels very well on it's hard rubber dual wheels, although it has to be said the black paint finish on the basic rims looked very crude. The main chassis casting is made of metal, and at the front this includes an accurate and substantial front weight depicting a set of wafer weights joined together. The grill and inner mudguard surround are all made of sturdy plastic that fit neatly together, the front lights being a clear plastic bar rather than a sticker as so often seen in the past.

Engine detail is limited but it does exist within the casting leading to the base of the cab where the Ad Blue tank, air filter and huge

exhaust are located, which are all accurate and to scale. There's plenty of colour located within the ancillary items attached to the outside of the cab, with the Ad Blue filler cap appropriately picked out in blue, whilst all of the cab lights are painted silver, and duals beacons picked out in orange. The model is fitted with a full set of sturdy hand rails, fold out wing mirrors, and indicator





bars. The only let down surrounding the outside of the cab is the GPS receiver which looks more a squashed and badly painted Tupperware box.

Inside the cab there's plenty more eye catching colour with both operator's and passenger seats adorned in the red of the body work whilst individual hand controls located on the control console to the right of the cab are picked out in both silver and yellow. The Instrument panel is shown as printed sticker, whilst even the foot pedals have had a splash of red from the paint brush. Overall this is a very pleasing part of the model.

The rear of the model is very primitive. Other than a warning triangle sticker, and the external hydraulic controls also picked out with graphics that's about it. The model returns to it's toy roots with simple addition of the functional

Britains two point hitch.

At £58 it's



## Finer Details



"One of Ertl's most eye catching liveried 1/32nd models to be released"



"Inside the cab there's plenty more eye catching colour with both operator's and passenger seats adorned in the red of the body work."



"Engine detail is limited but it does exist within the casting leading to the base of the cab."

### OUR VERDICT

**The Good:** Fantastic livery and cab detail.

**The Not so good:** Paint finish around the wheel rims.

<b>Model detail:</b>	80%
<b>Model accuracy:</b>	90%
<b>Build Quality:</b>	90%
<b>Functionality:</b>	85%
<b>Value:</b>	75%

**OVERALL: 84%**



## Britains New Holland T9.530 Tractor

■ **SCALE** 1/32 ■ **MODEL** New Holland T9.530 ■ **MAKER** Britains (Tomy)  
■ **PRICE** £29.99 ■ **AVAILABILITY** Out Now ■ **VERDICT** ★ ★ ★ ★ ★

**B**ritains very latest 1/32nd scale big blue articulated incarnation comes in the form of New Holland's revamped 525hp T9.530 in chunky super singles, a tractor that was originally launched by the company in 2014.

Britains latest version is a full European specification tractor equipped with the relevant marker boards and lighting arrangements. Whilst the bulk of this model is made up of sturdy and well finished hard plastic, the rear casting and axle housing is made

of metal along with the model's bonnet and cab floor pan.

At the front the model comes equipped with a one piece chin guard that includes a pair of tool boxes and the above mentioned marker board with lights picked out in silver and orange paint. The bonnet includes an embossed grill, and New Holland badge whilst the front lights are formed out of stickers. Overall the graphics and paint finish on this part of the model are very well finished. The same goes for the horizontally mounted exhaust protruding beyond the front mudguard on the left hand side of the tractor which is emblazoned with smart New Holland graphics. The cab steps too are painted in silver, and gain made from sturdy plastic.

The outside of the cab itself comes equipped with folding mirrors which arrive with the model in a separate plastic bag. I found this all rather pointless, even more so when

I had to file down the notches on the mirror allowing them to fit into the holes on the mounting brackets. Even with them fitted you can fold them back and this has no impact when repackaging the model. The cab top is well finished with all the remaining items such as flashing beacons and GPS receiver all looking very





# Finer Details



"All of the main controls, pedals and seating arrangement look to scale."



"The bonnet includes an embossed grill, and New Holland badge whilst the front lights are formed out of stickers."



"In keeping with the bulk of the articulated tractor models produced by Britains is fitted with a plastic quick hitch and frame."

## OUR VERDICT

**The Good:** Value for money.

**The Not so good:** The rear hitch.

<b>Model detail:</b>	80%
<b>Model accuracy:</b>	90%
<b>Build Quality:</b>	90%
<b>Functionality:</b>	85%
<b>Value:</b>	90%

**OVERALL:** **87%**

have from this model represents good value. A model which will find plenty fans from carpet farmers to collectors alike.

neat and tidy. Whilst the external work lights are separate items picked out in silver paint the main cab lights front and rear of the cab are once again coloured graphics.

The cab glass has both front and rear windscreen wipers picked out in black from the moulding whilst all of the main controls, pedals and seating arrangement look to scale, with smaller details again picked out neatly in grey and yellow paint. The consoles and screens look very good on this model.

The rear half of the tractor is loaded with plenty of features, including a further set of steps and grab rails leading to the fuel tanks between the rear wings. The wings themselves are well detailed incorporating some very pleasing and well finished graphics along with

separate work lights.

Moving to the rear linkage the model in keeping with the bulk of the articulated tractor models produced by Britains is fitted with a plastic quick hitch and frame, common to all real articulated tractors. The linkage made of plastic, and held together with ungainly looking rivets whilst correct in design, offers very little in the way of function, and the plastic used within this part of the model makes it look all the more cheap and tacky. Further plastic is used to pick out the hydraulic services too. The model does come with a tow hook so can at least be displayed, and used on a carpet farm with trailed implements.

The articulation joint is typical of Britains set up these days at replicating this particular function using a solid metal casting depicting the driveline pivoting around two hydraulic rams which do operate smoothly and offer a respectable level of steering. The model is sat on two free wheeling axles shod with chunky super single tyres surrounded a set of basic but functional rims.

At £30 this is standard fair for Britains top end prime movers these days and for the level of detail and playability you





## Universal Hobbies Deutz Fahr Agro Prima 4.56

■ **SCALE** 1/32 ■ **MODEL** Deutz Fahr 4.56 ■ **MAKER** Universal Hobbies  
■ **PRICE** £42.50 ■ **AVAILABILITY** Out Now ■ **VERDICT** ★ ★ ★ ★ ★



**A**iming on building on the success of their excellent 1989 Deutz Fahr DX 4.51 released late last year, Universal Hobbies have utilised the same casting to produce the later '90s built Agro Prima 4.56 which produced 90hp from its 4.1 litre Deutz engine when launched in 1991.

To all intents and purposes this is the DX4.51 with a white roof, and if we're being really picky it should strictly speaking be scaled 5 inches longer just like the wheel base of the real 4.56 compared to the DX 4.51. That aside this yet another

excellent little model from Universal Hobbies and will certainly please those collectors with a penchant for pre curvy Deutz Fahr machines. This tractor most definitely has its roots firmly set in the '80s when functional designed-with-a-ruler panels were the order of the day.

The model is shod on chunky soft rubber tyres which amply fill the front mudguards and rear wing extensions. The convex dishd rims look smart from the previous variations on this model, complemented by accurate hubs too. The model is fitted with a front linkage and A frame which





although detailed with smooth movable rams to alter the height, isn't fitted with an adjustable top link, and i'm not massively keen on the lower link arms being screwed directly to the A farm either. As front linkages go on a model of this price and detail, it's not all that functional without modification.

The front axle too whilst being able to steer in the correct manner is attached to the chassis casting in such a fragile manner it steers like and old Britains toy due to the amount of movement and play induced by the way it's fixed in place. Definitely a candidate for damage. The front grill is neatly detailed and embossed with the Deutz Fahr logo and fitted with the circular lights from the previous '80s built machines. The bonnet fits snugly onto the chassis and also comes fitted with the correct type of exhaust and air duct at the front of the cab.

The cab is fitted with a full compliment of hand rails, lights, mirrors, as well as a windscreen wiper too, common but accurate features of Universal Hobbie's models these day. Inside the cab is superbly finished with period chequer plate floor, with all of the controls in their correct and pre requisite places. The interior paint finish and detailing is second to none on this model. The cab top too is nicely finished too with flawless set of decals all around.

Moving to the rear of the model the floor pan and rear wings appear to be solidly finished with exterior lights fitted neatly. The rear linkage is

standard fair Universal Hobbies with the two point hitch and towing hook able to accept most implements from the likes of Britains and Siku too if you so wished. The rest of the rear hitch area such as hydraulic service connections, and continental style drawbar is arguably the crudest element of this model being part of the entire chassis casting.

Overall this is a fine model particularly appealing to fans of modern classics and Deutz Fahr collectors alike. Coming in at just over £40 for a limited edition

## OUR VERDICT

**The Good:** Excellent cab detail.

**The Not so good:** The way the front axle is attached to the chassis.

<b>Model detail:</b>	90%
<b>Model accuracy:</b>	90%
<b>Build Quality:</b>	90%
<b>Functionality:</b>	85%
<b>Value:</b>	85%

**OVERALL:** **88%**



## Finer Details



"The model is shod on chunky soft rubber tyres."



"The cab is fitted with a full compliment of hand rails, lights, mirrors, as well as a windscreen wiper."



"The front axle whilst being able to steer in the correct manner is attached to the chassis casting in a fragile manner."



# Britains John Deere 3765 Trailed Forager

■ **SCALE** 1/32 ■ **MODEL** JD 3765 ■ **MAKER** Britains (Tomy) ■ **PRICE** £14.99  
■ **AVAILABILITY** Out Now ■ **VERDICT** ★ ★ ★ ★ ★

One of Britains most hotly anticipated releases of the year has finally arrived for collectors and carpet farmers to assess. Having released a whole host of classic era tractors in the past few years without any real consideration to providing, or releasing any period implements to go with them Britains

have finally come up trumps with the addition of the John Deere 3765 trailed forager to their Heritage range for 2017.

The 3765 replaced the earlier 3760 in 1987 John Deere's range of trailed foragers requiring no more than 120hp to power the machine making the model perfectly suited the 40 and 50 series John Deere tractor models that Britains have already produced to create a wonderful matching pair.

Those that can recall the original orange Farm Hand forager with maize header and reciprocating spout will notice token similarities with that particular model and the incumbent John Deere, with the drawbar in particular baring a

large similarity to the older toy.

That however is where the similarity stops. This is without doubt a brand new model and plenty of research has gone into its development prior to release. The model was extensively studied and refined thanks to the owner of several of the real machines, Devon farmer David Luxton who in 2014 was crowned "Britains Biggest Collector." It's thanks to David's cooperation and knowledge that this model has begun to find its way onto collector's shelves and carpet farmer's silage fields.

The model itself is made up of four major pieces in both hard plastic and metal. The drawbar is made from metal and this fixed securely to the base of the drum which is

pieces is secured snugly behind the drum whilst the grass pickup header is held together with two substantial screws at either end of the protective metal covers that hold in place the header's constituent parts, the pickup reel, auger, and chopping drum.

The model runs on a freewheeling axle, whilst the plastic rims are surrounded by hard rubber tyres with a very accurate tread pattern. The model also comes with a PTO shaft which lines up perfectly with any of the Britains John Deere's rear hitches, and a rear trailer hitch with faux hydraulic pickup ram.

The overall build quality of the model is superb, built to survive the rigours of any carpet livestock farm, whilst still satisfying collectors with adequate, and accurate levels of detail for the price. The paint finish too is extremely sharp, and decals too, are very neat, refined and in all of the correct places on the model.

In terms of functionality, the model's discharge spout rotates,

constructed of moulded plastic. The plastic spout that comes in two main





## OUR VERDICT

**The Good:** Fantastic build quality and value for money..

**The Not so good:** Drive mechanism for pickup reel.

<b>Model detail:</b>	80%
<b>Model accuracy:</b>	90%
<b>Build Quality:</b>	95%
<b>Functionality:</b>	80%
<b>Value:</b>	95%

**OVERALL: 88%**

## Finer Details



"The model itself is made up of four major pieces in both hard plastic and metal."



"The overall build quality of the model is superb, built to survive the rigours of any carpet livestock farm."



"The model runs on a freewheeling axle, whilst the plastic rims are surrounded by hard rubber tyres with a accurate tread pattern."

and also includes the movable flap in place to alter the pitch of silage as it's fired from the spout and into the trailer behind. Some collectors and carpet farmers I've no doubt will be disappointed with the lack of a spout that actually reaches any of the silage trailers offered by Britains and other model manufacturers out there. But remember most of the trailers currently available were designed with high output self propelled foragers in mind instead.

Secondly it was agreed to

maintain the shorter spout length when researching the development of the model, as this is more accurate to the real machine even if it goes against the playability from a toy perspective slightly. The pickup reel too has been given a token ground drive cog to show it moving as it pushed along the carpet. However as with many similar arrangements I've seen like this over the years, it doesn't really run smoothly.

At just £14.50 this model offers

fantastic value for money, looks great on any carpet farm, and also doesn't look out place in a realistic display or on a collector's shelf. This really is an impressive, and long awaited classic implement from Britains. For those with the skill of customising models too this model should pose no problems for those wishing to add further detail to an already excellent release from Britains.





## Marge Models Case IH Magnum & NH T8.435

■ **SCALE** 1/32 ■ **MODEL** Case IH Magnum 380 & NH T8.435 ■ **MAKER** Marge Models  
■ **PRICE** £89.99 ■ **AVAILABILITY** Out Now ■ **VERDICT** ★ ★ ★ ★

**Y**ou'll notice we have combined the review of the new Marge Models Case IH Magnum 380 and New Holland T8.435 tractors. This is purely based on the fact both machines go down the same production line sharing common parts and components.

Traditionally and through reading feedback on various farming forums, the consensus is that the Magnum would be the tractor of choice if choosing between the two. Reliability for one reason or another seems to be a common question mark hanging over the New Holland. It's a tough market

and there is no doubt that the T8 has not fared too well here in the UK with T7's being more popular. The Magnum is by far the better seller but then Case have Fendt and Challenger to contend with, not forgetting Deere too. There has also been a large flurry of attention towards the Smart-trax machines from Case and New Holland so it will be interesting to see if Marge Models look at this option for a future model going forwards.

Back to the models for this review then. The first point of note is if you are interested in both models for your carpet farm, you'll need around £180 to secure them. That's not even thinking about the Blue Power edition or the Terracotta version. The latter is even more exclusive and prices have been seen around £200!

So for price alone, Marge Models have positioned themselves at the very top of the tree when it comes

to diecast model tractor cost. But are they worth the price? The first thing we were impressed with is the weight of these models. For high cost, you expect lots of metal, well we do and it's safe to say that the Case and NH here are solidly built replicas. Lots of diecast has been used which is pleasing. We want accurate fine detail too and Marge obviously deliver here.





The tractors are very accurate to the real deal but in all fairness, we'd expect Wiking's or UH's models to carry the same detail at prices £20-30 less than these replicas. Build quality and finish is very good however we were left wondering about the tyres. We almost want perfection for a £90 model and they just do not seem to sit right. Perhaps a bit angular and straight edged for an authentic rubber look. We also must gripe slightly on the bonnet and door's opening features which unfortunately are none. Again, we'd really hoped to have seen this on the replicas.

So in summary, do we recommend the tractors? We'd

advise that if you are able to, invest in at least one. They are distinctive in character and we are genuinely impressed with the metal feel to them. A few niggles elsewhere but they can still be enjoyed as excellent models. Not quite 5 star but close.



# Finer Details



"Interior detail is high as would be expected on the models"



"The rear linkage is modelled to a high standard but won't be easily compatible with being used with implements."



"The model is built well and made of quality materials.."

## OUR VERDICT

**The Good:** Well built and made of plenty of metal.  
**The Not so good:** Opening features not present.

**Model detail:** 90%  
**Model accuracy:** 95%  
**Build Quality:** 90%  
**Functionality:** 80%  
**Value:** 80%

**OVERALL: 87%**



# Universal Hobbies Massey Ferguson 1200

■ **SCALE** 1/32 ■ **MODEL** Massey Ferguson 1200 ■ **MAKER** Universal Hobbies  
■ **PRICE** £64.99 ■ **AVAILABILITY** Early 2018 ■ **VERDICT** ★ ★ ★ ★



**T**he Massey Ferguson 1200 was the first articulated (centre pivot) tractor

designed for the British market by a major manufacturer. The tractor was introduced in 1972 and then replaced by the upgraded version the MF 1250 in 1979. The original machine now has a cult following with prices rising it would appear each time a tidy example is sold.

In terms of models, Brian Norman, Classic Combines and Universal Hobbies all have produced examples with the latter originally releasing the item with a chisel plough on the back.

For 2018 the 1200 returns in a special exclusive livery as a Model Farmer Limited Edition release. The MF1200 will follow in the footsteps of the 2017 model, the Ford 7810. The

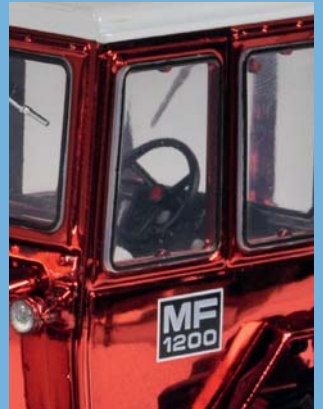
1200 is the same replica as previous but has a very distinctive red chrome finish. Previously unseen on a classic Massey of this era, the first



# Finer Details



"Chrome parts extend to even the most intricate of components on the model"



"The 1200 from UH was a great model with nice authentic detail."



"Contrasting parts left standard to compliment the red chrome finish."



## OUR VERDICT

**The Good:** Very striking red chrome finish.  
**The Not so good:** Not to everyone's tastes.

<b>Model detail:</b>	90%
<b>Model accuracy:</b>	95%
<b>Build Quality:</b>	90%
<b>Functionality:</b>	80%
<b>Value:</b>	80%

**OVERALL: 87%**

impression of the item having landed in the office this week is that of surprising fondness for it. Obvious bias aside, It won't be to everyone's tastes, that is for certain but with the eye catching glistening red chrome work throughout the iconic 1200 body, you could be forgiven for struggling to glance away once eyes have latched on to it! It's different that's for sure and serves a purpose as a unique special edition that is sure to become quite collectable. There

are plans to produce a maximum number of models based on orders. Just 500 if orders are less than 500 and there after based on the total number of orders. For the first time there is also a sliding price scale. For up to 500 models collector's will pay £79.99 and any amount above 500 will drop the price to £59.99. Orders are now being taken via a deposit system and delivery is expected to be early 2018.

**To order this model, please visit the magazine webshop or send our mail order form found later in this issue.**



## Agringegno Models Lamborghini 603DT And R603DTB

■ **SCALE** 1/32 ■ **MODEL** Lamborghini 603DT & R603DTB ■ **MAKER** Agringegno ■ **PRICE** £100 ■ **AVAILABILITY** Out Now ■ **VERDICT** ★ ★ ★ ★ ★



For those of you who are unaware of Agringegno Models they're an Italian based model manufacturer specialising in producing bespoke limited runs of Italian built cultivators, trailers, and slurry tankers. However, the company has also very recently turned it's hand to building some beautiful custom converted tractors replicating some of Lamborghini and Same's small 3 cylinder tractors from the '70s and early '80s.

The first of these model tractors to be released from the company are the 4wd 56hp Lamborghini 603DT, and slightly later R603DTB. Both models come packed in very nice wooden

boxes with the Lamborghini name emblazoned on the side if them.

The models themselves use existing Replicagri Fiat 4wd chassis, wheels and axles to which Agringegno have added custom made canopies and bonnets, before giving the tractors a very professionally applied dark blue and cream livery before applying the very neat Lamborghini decals to the models.

The Replicagri Fiat chassis appear to be a perfect match for the little Lambos right down to the beautifully detailed wheel rims, floor pan and wings. The standard fair Replicagri steering axle is retained and works extremely well. Engine and driveline detail is still very much in evidence and the new bonnets show off all the engine's parts very well.





Although none of the panels don't have any opening functions it's clear Agringegno have gone to a lot of trouble to get them absolutely spot on. The key differences between the two models are the decals and the front grills. The R603DTB having it's lights situated within bottom two thirds of the grill, whilst the 603DT has its headlights located in the top third. The grills too are fully custom-made parts and are highly detailed incorporating separate chrome lights too.

The original Fiat floor pan and controls have been retained which don't look out of place, and remain accurate for the models Agringegno have chosen to build. The rear linkage is the standard Replicagri fitment and is very basic compared to the rest of the model.

The models come equipped with separate top links, individual weight blocks, and a specially designed custom-made roof to fit over the top of the canopy to keep the rain out. A nice extra touch.

Agringegno are the process of building 200 each of the

## OUR VERDICT

**The Good:** Great to see a pair of highly detailed Lamborghini models.  
**The Not so good:** Limited Availability.

**Model detail:** 90%  
**Model accuracy:** 90%  
**Build Quality:** 90%  
**Functionality:** 80%  
**Value:** 90%

**OVERALL: 88%**

Lamborghini 603DT and R603DTB models which are each individually numbered. 2wd versions are expected to be released in due course along with the equivalent Same variations too.

Availability of these exclusive and sought-after collector's models is through Agringegno's Facebook page and selected dealers throughout mainland Europe. Coming in a £100 each makes them an expensive investment but once you do, you will not regret it. These are stunning little models finished to a high standard, and well worth putting some cabinet space aside for.

## Finer Details



"The models use existing Replicagri Fiat 4wd chassis with custom bonnets."



"The original Fiat floor pan and controls have been retained which don't look out of place."



"Coming in a £100 each makes them an expensive investment but once you do, you will not regret it."





## CAT Challenger 55

■ **SCALE** 1/32 ■ **MODEL** Challenger 55 ■ **MAKER** MFM  
■ **AVAILABILITY** One off only ■ **PRICE** N/A



Caterpillar in 1994 introduced a new range of Challenger tractor. A smaller tractor better equipped and more efficient to suit the needs more so than any previous Challenger machine. The range debuted with the 35 and 45 whilst it was not until 1997 that the 55 entered the market. 1997 also saw an agreement between Claas and CAT whereby Claas would market the Challengers in Europe under Claas liveries.

The range shared production facilities in Winnipeg, USA with the Ford New Holland Genesis build line and consequently, the tractor enjoyed the use of the Ford Cab, transmission, linkage and PTO. Similarities stopped there with engines

being CAT born and of course the track system being a new CAT design also.

Moving on to the model, we start with a similar concept to that that has been adopted by the real machine, borrowed parts. We'll come on to this shortly.

The 1/32 CAT Challenger 55 pictured here is deemed a one off production from Martyn Reeve of Martyn's Farm Models. Martyn is an experienced model builder with dozens of exquisite and unique replicas built over the years. This CAT 55 follows suit with an unrivalled level of detail accounting for the many distinctive features on the real tracked tractor. Let's start with what has been borrowed then. Accurately, the model utilises a Ford / NH Genesis cab and linkage from ROS which fits perfectly with the body of the machine. The real Challenger shared

Below: The still rare but more common red variation of the Bukh toy tractor produced by Vilmer along with some other diecast toys from the Danish company.



## Finer Details



"The cab has been adapted from a ROS Genesis series model."

many interior details as the NH and thus this is replicated in 1/32.

The track system is borrowed from an existing USK Challenger with modifications applied resulting in a very accurate depiction of the real life 55 tracks.

The model's borrowed parts stop there with the remaining build consisting of brand new components and parts. The majority of body work is resin cast which is finished in CAT livery to a very high standard.

The model looks every inch in proportion to the real deal and really is a stunning piece.

The only unfortunate thing we can mention is the fact that you'll possibly never get your hands on one. This was a bespoke build and is unlikely to be repeated anytime soon.



"The model is in perfect proportion to both borrowed parts and those that have been scratch built."



"It would be a magnificent machine to have on your carpet farm but chances are we'll never see a run of these."





## Steyr Haflinger & Pinzgauer

As part of a new series, we start to look at different kinds of machinery that may find use down on the carpet farm. **Robin Ketley** sends us this preview of such a model from Neo Scale Models.

**T**he Haflinger and the Pinzgauer are manufactured by Neo Scale Models - mainly in resin - in 1:43rd. Scale. To date the Military version of the Pinzgauer 4 x 4 plus the yellow personnel carrier and the beige 5-door version are still available, but very disappointingly 6 x 6 versions of the Pinzgauers, at this stage, have not been produced, so fingers crossed for some time in the future!

At the time of writing 1:87 Scale (HO Gauge) models appear to be reasonably available on the Internet with around 20 different ones listed including 6 x 6's and a 1:90 scale Haflinger by Schuco.

The models are as good as any 1:43 scale item on the market (whether manufactured in resin or metal) in fact I would suggest they are just about faultless, and I am somewhat particular

when it comes to buying models. I purchased the Haflinger 700NAP first to check the detail and appearance, the reproduction 'canvas' in plastic on the small 67mm long model being just about perfect, so immediately purchased the 100mm long closed version Pinzgauer and the yellow Pinzgauer 716M with 'canvas' top and sides and the snow-chains on the wheels. Enough said!

The models photographed in this article are the Haflinger, the yellow and black Pinzgauer 4 X 4 personnel carrier with canvas top and snow-chains, and the beige 5-door version 4 x 4 cargo / personnel carrier with closed body. They are known to be used as utility vehicles on farms so why not consider one for your carpet version!

### The Real Deal

#### Steyr-Puch Haflinger 700NAP

The Haflinger 700AP was a vehicle from Steyr-Puch, with four-wheel-drive, a rear longitudinal mounted engine, and complete with an off-road vehicle body style. It's engine was a naturally aspirated petrol 0.6 litre over head (OHV) valve two-cylinder with two valves per cylinder. The power is transmitted to the wheels through a five-speed and one reverse manual transmission. The





weight is 645 Kg. and has a claimed maximum speed of 48 MPH.

Carrying capacity off-road is 4 to 5 persons, has a length of 2850mm, width of 1400mm, height of 1740mm.

The Haflinger was manufactured from 1959 to 1975, with 16,647 made including 7,000 to the Swiss, Austrian, and Australian Armies, plus the Royal Navy.

#### Steyr-Puch Pinzgauer Turbo D 4x4 / 6x6

With the development of the Pinzgauer Turbo D, Steyr-Daimler-Puch has applied new methods in cross country vehicle design. The all-wheel drive technology which was put to its first test in the Haflinger 30 years ago, has meanwhile matured to perfection. The diesel engine in the Pinzgauer Turbo D fully complies with the trend towards economical, ecologically beneficial vehicles. Thus, the Pinzgauer is not only incredibly independent in difficult terrain but in numerous markets as well.

#### COCKPIT

In its clear and functional arrangement the cockpit design rivals any passenger car. In no time any driver will become familiar with it and handle the all-wheel drive technology safely and properly.

**COMFORT:** As in the cockpit, topmost regard has been paid to comfort of the entire interior design, the seats comparing most favourably in comfort with that of passenger cars - comfort which owing to ergonomically shaped seats with head rests and safety belts, will be a safe and reliable travelling companion.

**STEERING:** The high requirements regarding manoeuvrability that are demanded from and must be met by a cross-country vehicle are fulfilled by the Pinzgauer Turbo D thanks to its power-assisted steering, as the steering effort is minimised both in difficult terrain and when parking.

#### CROSS COUNTRY MOBILITY

In the Pinzgauer Turbo D, the comprehensive, close to 30-year all-wheel drive experience is being utilised. The entire all-wheel drive technology. i.e. front wheel drive and differential locks in both the front and rear axle can be

operated most easily by means of a simple toggle switch - Click-clack / On-off as terrain conditions demand, without stopping. You can fully concentrate on driving and will lose no momentum. You will be immediately familiar with the all-wheel technology of the Pinzgauer Turbo-D and can utilise it at once safely and properly.

**OVERHANG ANGLE:** The short overhangs permit coping with even extreme obstacles. Thus the angle of approach is 40 degrees and the angle of departure 45 degrees.

**GROUND CLEARANCE:** As the Pinzgauer Turbo D features portal axels, the ground clearance is a remarkable 335mm.

**BRAKES:** A cross country vehicle that ventures on such daring climbing tours needs a reliable brake system. Therefore the Pinzgauer Turbo D is equipped with disc brakes on all wheels, needless to mention, as a dual circuit system and power assisted. In the 4 x 4 version, the rear axle is provided with an additional load-sensitive automatically operating brake proportioning device. This device ensures directional stability in all braking situations. The mechanical hand brake acts independently of the service brake on the

central drive shaft, this means on all wheels when all-wheel-drive is engaged.

**TRANSMISSION:** The ZF five-speed transmission is fully synchronised. As an option a ZF four-speed automatic transmission with converter lockup clutch is also available.

**CHASSIS:** Torsion-resistant centre-tubular chassis with portal swing axles, integrated transfer box and axle drive. An automatic levelling device on the rear axle (4 x 4 only) provides for maximum comfort and safety. Independent of the loading condition, the height of the body above ground remains unchanged. Thus the position of the vehicles centre of gravity remains constant; the ideal zero camber axle position is maintained from empty to full load condition. On the wheels the full spring travel is maintained and bumps are absorbed more easily.

E impeded, for example by a minimum of cavities; those necessary for structural reasons are protected through wax injections. The joints are sealed with PVC as is the underbody. Almost all components used are made from galvanised steel. Price: Just a little expensive - but what a machine!





## Vilmer Bukh DZ30

- **SCALE** 1/32 ■ **MODEL** BUKH DZ30 ■ **MAKER** Vilmer (Denmark)
- **VALUE** £200 - 400 ■ **RARITY** Extremely Rare



For those of you familiar with Bukh models, you may have seen recent replicas from Atlas Editions in 1/32 scale. However it is the older replicas that are of interest to us this issue. Vilmer a lesser well known Danish toy company in the 1950's and 60's were renowned for producing diecast cars and commercials. They had a limited farm toy range and it is thought only a couple of tractors were produced. Interestingly, one is based on the Massey Ferguson 35 which is commonly seen in red and also known under the name of Lion (Molberg). The other is a Bukh model and again in red. Both tractors were also released in sets. It is also thought that Vilmer sold the moulds for said models to South America to a company named Chico of Columbia. Looking at the packaging of models found in South America suggests however that a Brazilian company known as Fidart also produced the toys or at least distributed them.

Back to the model this issue then and you will see straight away that the colour is in fact blue and is a model of the Bukh DZ30. There

# Finer Details



Below: The still rare but more common red variation of the Bukh toy tractor produced by Vilmer along with some other diecast toys from the Danish company.

is some uncertainty to the exact origins of this model however closer examination suggests it is an original piece from Vilmer. There blue is finished in such a way that it is unlikely to have been repainted. The model pictured was purchased

from the Spalding Model Tractor Show and the vendor indicates that the bonnet is actually a white metal reproduction along with the decals. Everything else is stated as original.

Looking at the toy in detail, there are subtle differences to



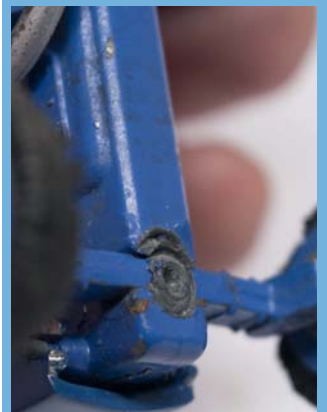
"The steering wheel is metal not plastic on the blue version."



"Vilmer is stamped into the diecast body of the tractor."



the red variant including the front axle. This does not rotate on this version where as red issues have a moving axle. In addition, the steering wheel on the blue Bukh is produced from metal together with the seat. Other variants in red are produced in plastic. It may be the case that this item is indeed an early pre-production release but unfortunately it would be hard to be 100% confident in this assumption. We'll keep our eyes peeled for similar versions but for now, enjoy the images of this very rare farm toy.



"The front axle does not rotate on this version of the toy tractor. It moves on known red versions."





HINTS AND TIPS

DIFFICULTY RATING ★

## Conversions Made Simple

# Siku Massey Ferguson 8280 Xtra

Ever wanted to convert your own model? Have you ever marvelled at the custom work of others but been afraid to attempt anything, ng you might destroy a perfectly good standard model or in some way lose your patience and end up hacking off an index finger. Model Farmer contributor and collector **David Laley** shows how some simple tweaks can transform a standard model.



like many other collectors out there marvel in amazement whenever I see some of the extraordinary custom and scratch built tractors built by the specialist model makers that display and sell their works of art at the various shows I attend. I have always had a passion for these types of exclusive and often one off special builds, so much so my own collection is home to many amazing creations from some europe's top model makers.

But to have a go myself, no chance I thought. The last thing I wanted to do was be one of those people with all of the gear, but

no idea, and I was also petrified at the thought of attempting to slice and a dice a perfectly good model, only to completely ruin it. That was until I started looking at the incredibly basic but sturdy Siku Massey Ferguson 8280 Xtra I had sat in my collection.

The model was placed alongside a slightly higher detail Siku Farmer+ Massey Ferguson 8270, the LCN Show edition of the same model, and a 1/32nd Farm Models version converted to run on dual wheels. The addition of extra beacons, number plates, and different coloured paint used to high light various other details on the models such



## Before you start



You'll need to source a MF8280 Xtra if you do not have one. Try Ebay or your farm model dealer. You'll need to source the parts shown from 1/32 Farming Models. They're on ebay and Facebook. Target price for parts and the donor tractor are £25.00.

## Shopping list

- Humbrol black gloss paint
- Fine paint brushes
- Super glue
- Sumo liveried front weight block
- Rear wheel weights
- Flashing beacons
- GPS receiver



Rear wheel weights fitted, paint applied to the wheel hubs and cab lights, whilst the beacons are drying and awaiting fitting to the can top.



The finished conversion looking resplendent and unique for a very small amount of simple additional extras.

wheel hubs and cab controls were subtle, but made such a massive difference to the appearance of the standard model. It made them look far more interesting.

So rather than live in fear of taking a hacksaw to the 8280 Xtra to perform major surgery, and instead armed with some modellers fine paint brushes a couple of tins of Humbrol, a small tube of super glue, and some accessories bought from 1/32nd Farm Models I reckoned that even with my limited patience and talent I could turn the mundane Massey into something a little more exciting.

The first part of the puzzle was very straight forward, I simply sited an already painted Sumo liveried weight block to the tractor's front A Frame. I followed that up by very carefully painting the wheel hubs black, and also went around each of the cab light front and rear to highlight those more prominently too. The flashing beacons I bought

too had their bases painted too prior to fixing them to the cab top.

I required some serious machinery for the next phase of operation 8280 Xtra using a small hand drill to carefully drill holes into the top of the cab to situate and glue the two beacons in place. A GPS receiver and aerial were also added to the cab top to complete that part of the makeover. Lastly a pair of rear wheel weights, painted black were added to the rear rims, positioned neatly in place with a small amount of glue.

There's nothing barely remotely skilful in the small things I did to this model, but they turned a bog standard toy I was on the verge of selling, into something I'm now rather proud of, and goes to show that even the smallest and most straight forward of modifications can make a big difference to the appearance of a model, which took just a few hours to complete.





## Spalding Model Tractor Show Autumn 2017

Collector's and enthusiasts flocked to the Autumn Spalding Model Tractor show this month for the bi-annual event's second offering of 2017. **David Laley** sends us this report from the show.



Left: Equally smart Ford 6610 and Fordson E27N in tow outside the main Hall at Springfields. Above: 3. Fine array of Caterpillar construction models available at Spalding.



Above: Ford 3600 and Fordson N celebrating 100 years of Ford and Fordson tractors outside Springfields for the Spalding Model Tractor Show.



Left: Customised with nicely weathered and dirtied row crop duals this New Holland T7.235 looked very smart.



Below: Well presented Britains conversions in the shape of this John Deere 8370R and NC dump trailer



Above: Beautifully constructed 1/87 scale layout made up largely of Siku models.

# Show Report



Above: Bellwater Farm, an absolutely superb small scale classic era display with lots of custom built gems hiding in the sheds.



Left: Another view from the Bellwater farm yard.



Above: Harvest action taking place at the impressive Bellwater Farm.



Above: A favourite with the younger collectors and carpet farmers at Spalding, Jake the John Deere tractor.

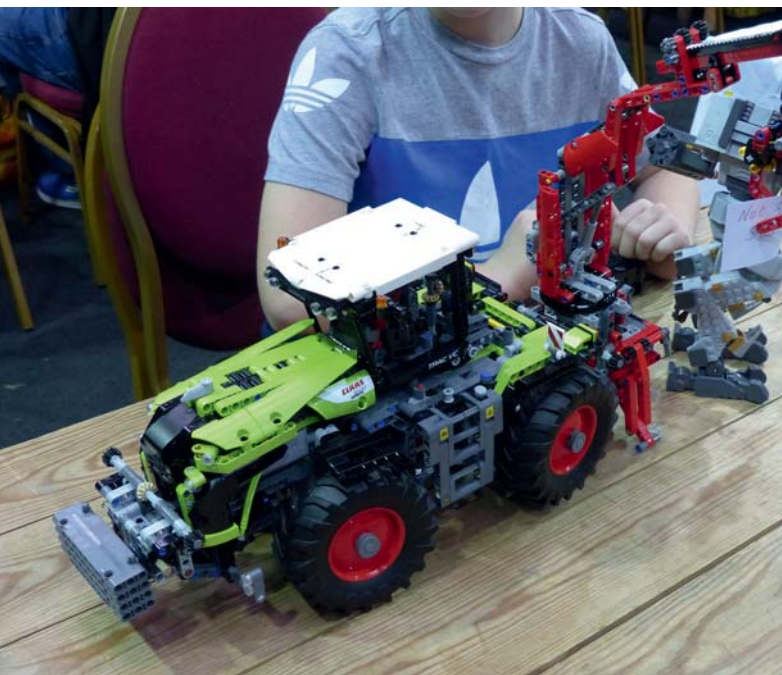
Above right: Muddy Farm Models had their wonderful range of highly realistic weathered models including these fantastic looking Britains based spreaders.



Right: Gibbard Tractors had their exceptional array of tractor and implement literature available at Spalding.



Above: Niels Anchelton had a great selection of custom built special editions from some of mainland Europe's top custom builders.



Above: Very smart Lego Technic Claas Xerion model on display.



Above: Spalding regular Cenfyn "Ken" Davies had a fine array of older models and custom builds available on his stand.



Right: Ian Hopper had a fine selection of older boxed Britains, Ertl, and Siku models for sale at Spalding.



# Show Report



Above: 18. This stunning pink liveried Claas Lexion 600 has been especially customised by Peter Hardy of 1/32nd Farming Models to raise money for the Clic Sargent Cancer charity. The model which is being raffled, will find a new keeper when the draw takes place at the Lakeland Model Farm and Construction show on November 13th



Above: One off custom built special from master builder Martyn Reeve is this stunning Caterpillar Challenger 55.



Above: Nigel Ford of Scaledown Models was thinning out some of his personal collection which included this New Holland FX58 forager.



Above: Let there be light! Impressive custom converted 1/16th scale Ertl John Deere 4455 equipped with full custom lighting kit. Right: Longson Lights range of custom light equipped models for sale at Spalding.





Above: Large scale Caterpillar 941 tracked loader on offer at Spalding.  
 Right: Unusual cow print liveried Britains NC slurry tankers making an appearance at Spalding.





**BRUSHWOOD TOYS**  
EST. 1984  
FARM & EQUESTRIAN  
QUALITY - AUTHENTIC  
MADE IN GREAT BRITAIN

## Fast, Friendly & Reliable Service!

[info@brushwoodtoys.co.uk](mailto:info@brushwoodtoys.co.uk)

# www.brushwoodtoys.co.uk





Arriving end of August!

New Britains 1:32 scale  
John Deere Trailed Forager  
Limited Edition - Reserve yours now!



Upcoming Shows!

2 Sept - Morton

9 Sept - Frome

16/17 Sept - Newbury

*We bring your farm diorama to life!*










Full Stockists of:




Unit 8&9 Hacche Lane Business Park  
 South Molton, North Devon.  
 EX36 3LH. United Kingdom

Tel: +44 (0)1769 574501



## FARM DIORAMA by Colin Drew

A brand new feature for the magazine from this issue is our reviews of layouts. We'll profile a layout in each issue and provide a review based on the key features and components of the diorama. **Model Farmer** this time around looks at Colin Drew's layout from the Autumn 2017 Tractorworld show at Newbury.

**W**hat to include when reviewing a diorama? We've been talking to many readers who have been asking us to consider some kind of diorama review in each issue so we have listened and here we are. We're not here to criticise albeit we'll make suggestions where we can so

essentially, the main goal of these articles will be to provide readers with closer looks at the various farm dioramas (in any scale) from around the country and beyond. It just so happens that we attended Tractorworld in Newbury recently and Colin's layout was present at the show so a worthy candidate we thought for our first review







Colin's farm layout has been seen at many show's and generally we see a good mix of off the shelf models consisting of modern machinery and classics from a variety of model makers. You'll notice that the layout featured here has two distinct harvest scenes. One involving the magnificent Replicagri International combine in tandem with a classic Massey baler outfit. The other has the large UH MF Activa (old and new versions) combines in

action with Case, Valtra and Deutz modern tractors complimenting the other work taking place.

Elsewhere on the layout, there is a silage scene with machinery of a more classic era once again. A Ford 7810 Silver Jubilee takes a load away whilst the Claas Jaguar chopper is being stalked by a Renault TX from Replicagri. In the yard, a Fiat 110-90 is unloading at the clamp whilst a John Deere 7810 is working it. Colin has built the layout with realistic

scenery using materials mainly from DIY stores. This is evident with the matting used for the wheat field. We particularly like the stone wall and gravelled yard where you can just make out a tidy Britains Ford in shot.

In summary, this is a well presented diorama. Perhaps some weathering on the machinery would finish it off but of course, many collector's are keen to keep their models in pristine condition.





## Case IH Quadtrac 20th Anniversary

Model Farmer's resident Tractor Twitcher **David Laley** looks into his vast archive of real machinery photographs to bring you a photographic account of the Case IH Quadtrac's 20 year existence from the original 9370 launched to UK farmers in 1997 to the very latest top of the range 620.

**C**ase IH began to develop its 4 track articulated layout in the late '80s and early '90s, and showed an experimental version of the system based around one of its 9150 Steiger tractors at the 1992 Farm Progress Show. Further variations followed based around later 9200 series machines before the machine was officially launched as the Quadtrac at the 1996 Farm Progress Show in Iowa.

European farmers had to wait until the SIMA show held in Paris during February 1997 before they could catch a glimpse of the impressive Quadtrac, whilst in the UK it wasn't until the

Cereals Event in June 1997 that the 360hp tractor made its first major public working appearance of the year.

The Quadtrac principle was very different to competitors rubber tracked alternatives at the time too, with Case IH choosing to retain the pivot steering concept over and above the conventional twin track skid steer arrangement used most notably by Caterpillar. Case IH reasoned there would be far more traction available when working in less than ideal conditions, that their track system would maintain complete ground contact whilst working uneven terrain, and thanks to the articulated steering principle would



Inset: Stunning Case IH Quadtrac 9380 working with this Sumo Trio, and TWB packer in 2014. The 9380 was introduced in 1998 as an uprated version of the earlier and original 9370.



Left: Case IH Quadtrac STX480 working for a contractor in 2014 yoked to this trailed Watkins Quad –Till cultivator. Below: A pair of STX Quadtracs working down stubble with Sumo Trio cultivators in 2016. The STX range was launched in 2000.



# Real Machinery

**Inset:** Immaculate Case IH STX450 waiting to go drilling with a huge Horsch direct drill for Forsyth Farm Work last year.



avoid the problem of scuffing and creating ridges whilst turning on headlands.

The original Case IH Steiger Quadtrac design was revamped and updated with the launch of the STX line in 2000 with the 440hp Cummins QSX powered STX440 topping the range. Building on the success of these earlier machines and moving into the Quadtrac's 20th year of production, the current range consists of 7 models from 370hp to the 682 maximum horsepower of the 620.



**Below left:** New Case IH Quadtrac 580 is breaking down ex vining pea land with this Great Plains SLD cultivator and following press. **Below:** This early 360hp Quadtrac 9370 is seen last Summer making short work of pulling this Quivogne Tinemaster cultivator. Original 9370 Quadtracs were never fitted with their model numbers.





Above and Below: One of the most extraordinary sights you're ever likely to see. No less than 50 Case IH Quadtracs of all types congregate at Hemswell Cliff in Lincolnshire not only to break a world record for working together simultaneously in 2012, but also to raise well over £30,000 for charity.



Right: One of the smaller framed tractors in the STX range was the 380. This example is seen cultivating ex sugar beet land with a Vaderstad Rexius cultivator.

**Inset: Power!** Current top of the range Case IH Quadtrac is the 620 which is capable of delivering a maximum of 682hp. This example working on a farm in North Lincolnshire comfortably handles this 10 furrow reversible Kverneland plough.



**Below:** Currently operating with only its second owner in its 20 year life span this very smart 1997 9370 has no problem handling this 8 metre Vaderstad drill on a Warwickshire farm.



Above: Quadtracs are capable of more than just heavy cultivation work, as proven by this impressive 535 yoked to a massive Horsch chaser bin this Summer. Right: A more modern 450 Quadtrac also running alongside a combine in the shape of this John S680i.



# MODEL **Farmer** Exclusive OFFERS

Order by mail, via [www.themodelhobbyshop.com](http://www.themodelhobbyshop.com)  
or by phone 01406 422848!

## Massey Ferguson 1200

Produced by Universal Hobbies | 1/32 Scale | Limited to 500 models | Exclusive red chrome finish | Pre-order with a deposit | Available early 2018

**Deposit Price £15.00** Pay balance on delivery\*

Order Code MF001



## Ferguson TE20

Produced by Universal Hobbies | 1/8 Scale | Limited to 1000 models | High Detail | Large Resin Model | Very Limited | Available Now!

**RRP £249.99 MF Price £200.00**

Order Code MF002



## New Holland T6.165

Produced by Universal Hobbies | 1/32 Scale | New Out | High Detail | Diecast Model | Available Now!

**RRP £49.99 MF Price £39.99**

Order Code MF003



# MODEL Farmer Clearance

1/32 Claas Jaguar 60 SF Harvester



**Price £32.00** Order Code MF004

1/32 Claas Volto Swather



**Price £28.00** Order Code MF005

1/32 Horsch Tiger



**Price £34.00** Order Code MF006

1/32 Volvo BM Valmet 705



**Price £20.00** Order Code MF007

1/32 Ford TW30 4x2 (1979)



**Price £25.00** Order Code MF008

1/32 Kuhn FC 3160 TCD



**Price £25.00** Order Code MF009

1/32 Case Maxxum MX 170 8 Wheels



**Price £22.00** Order Code MF010

1/32 Deutz-Fahr Discmaster 232



**Price £20.00** Order Code MF011

1/32 Rabaud Mounted Auger



**Price £13.00** Order Code MF012

[www.themodelhobbyshop.com](http://www.themodelhobbyshop.com)

**Call 01406 422848**

Call +44 1406 422848 from outside the UK

Send your form to

MF Orders, 3 Orchard Close, Saracens  
Head, Holbeach, Lincolnshire. PE12  
8AR. United Kingdom

**We do not process  
payment until your  
order ships!**

**Order today!** Free Postage for UK ORDERS OVER £100 otherwise £4.99 for UK, £9.99 for EU and £16.99 for ROW

**PLEASE STATE THE ITEM CODE(S) YOU WISH TO ORDER:**

---



---



---

**YOUR DETAILS:**

Title ..... Forname .....

Surname .....

Address.....

Postcode .....

Telephone incl. Std code .....

E-mail.....

**PAYMENT DETAILS:**

**CHEQUE** I enclose a cheque for \_\_\_\_\_ (made payable to IGP Ltd.)

**CREDIT/DEBIT CARD** Please debit the amount of \_\_\_\_\_

from my:  Visa  Mastercard  American Express  Switch/Maestro

CARD NUMBER

_____	_____	_____	_____
-------	-------	-------	-------

EXPIRY DATE      VALID FROM      SEC. No      (FROM BACK OF CARD)      ISSUE. No

_____	_____	_____	_____
-------	-------	-------	-------

(SWITCH/MAESTRO ONLY)



## Chris Traves shares his carpet farm pictures

I am happy to share some of our farm pictures that my son and I compiled. We have a Claas Xerion that we have got on demo to see if she could manage the Vaderstad topdown on some wheat stubble. There is a JD 7430 spreading some lime on our fields to give them some feed for the following crops. The third pic is our 6190r which has just completed our first field of potatoes with no problems and the last pic is our 2 6930s ploughing barley stubble in late September.





# MODEL TRACTOR PLANT & CONSTRUCTION *SHOW*

THE MODEL TRACTOR SHOW FOR ALL AGES



## SUNDAY 11<sup>th</sup> FEBRUARY 2018

10am – 4pm

Last admission 1 hour before closing

### WARWICKSHIRE EXHIBITION CENTRE

Fosse Way, Nr Leamington Spa, CV31 1XN



**A MAJOR  
EXHIBITION FOR  
ALL TRACTOR,  
TRUCK, PLANT &  
CONSTRUCTION  
MACHINERY  
ENTHUSIASTS**

- 2,280m<sup>2</sup> exhibition hall packed with things to see and buy from leading suppliers and dealers.
- Competition section including scratch built, customised & converted models & dioramas - why not enter your work?
- Full size vintage tractors & machinery.
- Model Active Zone featuring radio control Tamiya plant, lorries & trucks.

SHOW SPONSORS

**truck**

**Plant &  
Machinery**  
MODEL WORLD

**MODEL  
Farmer**

#### ENTER YOUR WORK

To enter your work please download the entry form from our website or call us on 01926 614101

#### ADMISSION PRICE

£6.50 if booked in advance via website  
£7.50 if purchased on the day

[www.modeltractorshow.co.uk](http://www.modeltractorshow.co.uk)



@MeridienneEx



Meridienne  
Exhibitions LTD

Organised by Meridienne Exhibitions Ltd



# J24TRAC

THE FARM TOY SHOW FOR  
THE SOUTH AND WEST

## Sunday 3rd December 2017

10am - 3.00pm

Junction 24, Market Way,  
North Petherton, Somerset TA6 6DF

**Junction 24 is at M5 Junction 24!**

100 tables of farm toys, models and dioramas.

Entrance £5.00

Accompanied Under 14s Free

Early Entry £10.00 from 8am

For information contact Karen Harris on

01380 830659 or

e-mail [office@farmmodels.co.uk](mailto:office@farmmodels.co.uk)

## 11<sup>th</sup> LAKELAND MODEL FARM & CONSTRUCTION SHOW

### Sunday 12th November 2017

10am - 4pm

The Rheged Centre, Redhills,  
Penrith, Cumbria, CA11 0DQ

Adults £6.00 - Children under 16 Free

Email: [lakelandmodelshow@btinternet.com](mailto:lakelandmodelshow@btinternet.com)

Facebook: Lakeland Model Farm and Construction

Tel: 01388 835011 - Mobile: 07766 252426

# NorthWest FarmModels

COCKERMOUTH, CUMBRIA

[www.northwestfarmmodels.co.uk](http://www.northwestfarmmodels.co.uk) [contact@northwestfarmmodels.co.uk](mailto:contact@northwestfarmmodels.co.uk)



MARGE MODELS 1:32 SCALE NEW HOLLAND T8.435 TERRACOTTA VREDESTEIN - £220



MARGE MODELS 1:32 SCALE NEW HOLLAND T8.435 VREDESTEIN EDITION - £130



MARGE MODELS 1:32 NEW HOLLAND T8.435 "BLUE POWER" VREDESTEIN EDITION - £130



MARGE MODELS 1:32 SCALE CASE IH MAGNUM 380 CVX - £90



UNIVERSAL HOBBIES 1:32 SCALE CASE IH 240 PUMA CVX REAR DUALS - £33



MARGE MODELS 1:32 SCALE NEW HOLLAND T8.435 - £90



UH 1:32 SCALE NEW HOLLAND CR10.90 COMBINE HARVESTER \*\*NEW\*\* - £130



UH 1:32 SCALE NEW HOLLAND T5.110 TRACTOR \*\*NEW\*\* - £42



UNIVERSAL HOBBIES 1:32 SCALE NEW HOLLAND T6.165 TRACTOR \*\*NEW\*\* - £45



UNIVERSAL HOBBIES 1:32 SCALE RAUCH AXIS M 30.2 SPREADER - £28



UNIVERSAL HOBBIES 1:32 SCALE KUBOTA M7171 (EUROPEAN VERSION) - £52



ERTL 1:32 SCALE JOHN DEERE 9570RX TRACKED TRACTOR - £80



BRITAINS FARM 1:32 SCALE JOHN DEERE 3765 TRAILED FORAGE HARVESTER - £15



REPLICAGRI 1:32 SCALE CLAAS DOMINATOR 88S DEALER BOX - £85



REPLICAGRI 1:32 SCALE CLAAS DOMINATOR 98S LIMITED EDITION - £110



BRITAINS FARM 1:32 SCALE NC 314 DUMP TRAILER - £16



BRITAINS FARM 1:32 SCALE NC REAR DISCHARGE SPREADER - £16



WIKING 1:32 SCALE CLAAS LEXION 760TT COMBINE HARVESTER - £150



WIKING 1:32 SCALE CLAAS LINER 2900 TWIN ROTOR RAKE LIMITED EDITION - £80



WIKING 1:32 SCALE CLAAS LEXION 760TT CONSPPEED HEADER DIRTY LIMITED EDITION - £160

Order ONLINE Today We Accept All Major Debit & Credit Cards



WE ALSO ACCEPT PayPal



Free Post And Packing To All Orders Over £150

Phone Mike Today On 07834536907 To Answer Any Of Your Questions

# SUBSCRIBE TODAY



**Subscribe to Model Farmer for 12 issues for just £40!**

**A saving of £20!**

**You also receive these great subscriber benefits:**

- Free delivery direct to your door.
- First look – get your issues before they hit the shops.
- Guarantee that you never miss an issue for 2 years.
- Exclusive discounts on farm models. See below.
- Price protection against cover price increases during your subscription period.
- Prize Draw Each issue - A lucky subscriber will win one of the latest farm models on the market.

## 3 EASY WAYS TO ORDER:

**1 ONLINE**  
www.themodelhobbyshop.com

**2 PHONE**  
UK: 01406 424681

**3 POST**  
Please complete the form below and return to our address at the bottom of the form.

Please tick this box if your address is the same as above.  
Please update your details below where necessary.

Title ..... Forename .....  
Surname .....  
Address .....  
Postcode .....  
Telephone incl. Std code .....  
E-mail .....

PERSONAL DETAILS

**SUB OPTIONS I AM ORDERING**

Please tick

- SUB ONLY**  
(go to option 1)
- SUB AND MODELS**  
(go to option 2)

### OPTION 1 SUBSCRIPTIONS

UK ONLY SUBSCRIPTIONS

- I would like to pay £25.00 for a 1 year subscription (6 issues)
- I would like to pay £40.00 for a 2 years subscription (12 issues) **SAVING £20.00**

**ADD PLANT MODEL WORLD MAGAZINE TO YOUR MF SUBSCRIPTION**

I would like to subscribe to Plant Model World (only with MF Sub)

- 1 year £20.00     2 Years £40.00     3 Years £50.00

Please make any cheques payable to **IGP LTD**

Visa     Mastercard     American Express     Switch/Maestro

ISSUE NUMBER    SECURITY NO.    (SWITCH/MAESTRO ONLY)    ON REVERSE OF CARD

CARD NUMBER

VALID FROM DATE    EXPIRY DATE

Signature    Date



### OPTION 2 EXCLUSIVE MAGAZINE OFFER

I would like to subscribe to Model Farmer, Truck Model World and Plant & Machinery Model World for 1 year for just £50



**TRIPLE SUBSCRIPTION OFFER**  
**RRP OVER £80!**

RETURN THIS FORM TO US AT THE ADDRESS SHOWN BELOW:

MODEL FARMER SUBS  
3 ORCHARD CLOSE, SARACENS HEAD  
HOLBEACH, LINCOLNSHIRE  
PE12 8AR

POST YOUR ORDER

# G & M Farm Models

Rose Cottage, Dane End, Therfield, Nr Royston, Hertfordshire, SG8 9RJ, England

Email: [info@gandmfarmmodels.com](mailto:info@gandmfarmmodels.com) | Website: [www.gandmfarmmodels.com](http://www.gandmfarmmodels.com)



1/32 Universal Hobbies Fiat 750 Special 2WD with Canopy



1/32 Universal Hobbies Rauch Axis M 30.2



1/32 Universal Hobbies New Holland CR10.90 Wheeled Combine



1/32 Universal Hobbies McCormick X8-680



1/32 Universal Hobbies New Holland T6.165



1/32 Universal Hobbies New Holland T4.65



1/32 Universal Hobbies New Holland T5.110



1/32 Universal Hobbies Kubota M7171 (European Version)



1/32 Ertl John Deere 1775NT ExactEmerge 16 Row Planter



1/32 Ertl John Deere 7270R with Loader



1/32 Ertl John Deere 8450 4WD with Duals



1/32 Ertl New Holland Roll-Belt 560 Round Baler with 3 Bales



1/32 Universal Hobbies Deutz D 60 05



1/32 MarGe Models New Holland T8.435



1/32 MarGe Models New Holland T8.435 Blue Power



1/32 MarGe Models Case IH Magnum 380 CVX



1/32 Ertl John Deere 9370R 4WD with Duals (2017 Farm Show)



1/16 Ertl Prestige John Deere 4240



1/32 Britains John Deere 3765 Trailed Forage Harvester



1/32 Ertl Case IH Magnum (175th Anniversary Edition)



**PHONE GRAHAM, MICHELLE OR LAYLA ON  
TEL: 01763 287341**

WE ACCEPT PAYPAL



MOST MAJOR CREDIT / DEBIT CARDS ACCEPTED

FORTHCOMING 2016 SHOWS

11th & 12th of November 2017 Newark Pavilion, Newark Vintage Tractor & Heritage Show, Newark Showground, NG24 2NY | 18th & 19th of November 2017 Open Weekend at Rose Cottage, SG8 9RJ | 25th & 26th of November 2017 LCN Show, IJsselhallen, Zwolle, The Netherlands | 25th & 26th of November 2017 LCN Show, IJsselhallen, Zwolle, The Netherlands | 3rd of December 2017 J24 Trac, The Sedgemoor Hall, Junction 24, Market Way, North Petherton, Somerset, TA6 6DF